

## Supplementary Materials

**Appendix 1: Search Strategy**

## PubMed

(VTE[tiab] OR venous thromboembolism[tiab] OR DVT[tiab] OR deep vein thrombosis[tiab] OR PE[tiab] OR pulmonary embolism[tiab] OR “thromboembolism”[MeSH])

AND

(prevention[tiab] OR prophylaxis[tiab] OR lovenox[tiab] OR heparin[tiab] OR enoxaparin[tiab] OR anticoagulant[tiab] OR anticoagulants[MeSH] OR mechanical[tiab] OR “heparin”[MeSH] OR tinzaparin[tiab] OR dalteparin[tiab] OR Fragmin[tiab] OR Innohep[tiab])

AND

(Gynecolog\*[tiab] OR Gynaecolog\*[tiab] OR Gynecologic Oncolog\*[tiab] OR “gynecology”[MeSH] OR “Genital Neoplasms, Female/surgery”[MeSH])

NOT

(obstetric\*[tiab] OR cesarean[tiab])

## EMBASE

(VTE:ti,ab OR ‘venous thromboembolism’:ti,ab OR DVT:ti,ab OR ‘deep vein thrombosis’:ti,ab OR PE:ti,ab OR ‘pulmonary embolism’:ti,ab OR ‘venous thromboembolism’/mj)

AND

(prevention:ti,ab OR prophylaxis:ti,ab OR lovenox:ti,ab OR heparin:ti,ab OR enoxaparin:ti,ab OR anticoagulant:ti,ab OR ‘anticoagulant agent’/mj OR mechanical:ti,ab OR ‘heparin derivative’/mj OR tinzaparin:ti,ab OR dalteparin:ti,ab OR Fragmin:ti,ab OR Innohep:ti,ab)

AND

(Gynecolog\*:ti,ab OR Gynaecolog\*:ti,ab OR Gynecologic Oncolog\*:ti,ab OR ‘gynecologic disease’/mj OR ‘female genital tract tumor’/mj)

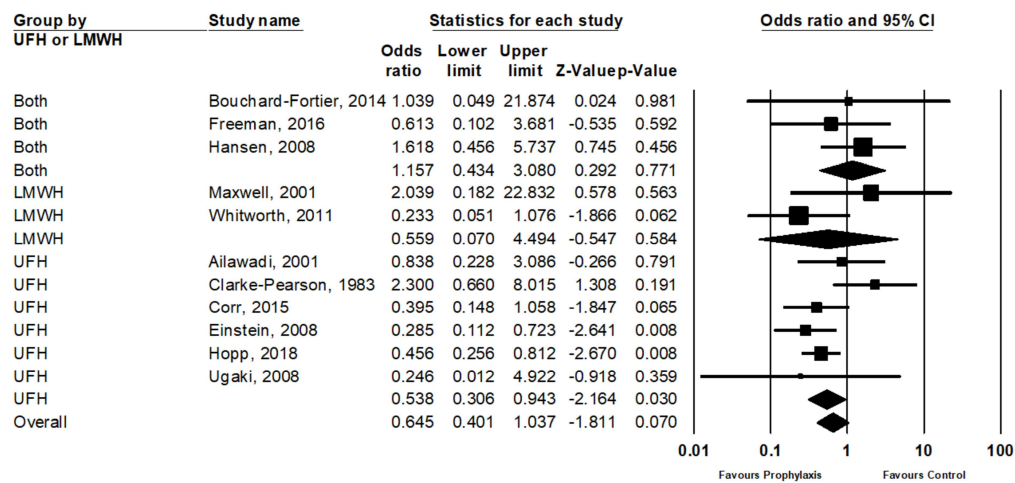
NOT

(obstetric\*:ti,ab OR cesarean:ti,ab)

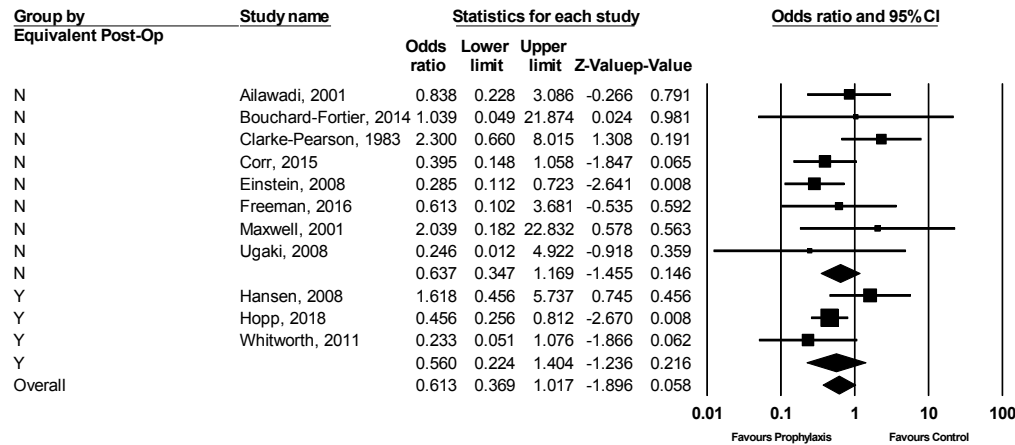
Table 2. Quality assessment of the included studies

First author	Selection	Comparability	Exposure	Quality Assessment
Ailawadi	***	**	**	High
Bouchard-Fourtier	***	-	**	Poor
Clarke-Pearson	***	**	***	High
Corr	**	**	**	High
Einstein	***	*	***	High
Freeman	***	**	***	High
Hansen	***	**	***	High
Hopp	**	*	-	Poor
Maxwell	RCT 3/5 Jadad			
Pelkofski	***	**	-	Poor
Piver	***	-	*	Poor
Renata	***	-	*	Poor
Swenson	***	-	**	Poor
Ugaki	****	-	-	Poor
Whitworth	***	-	*	Poor

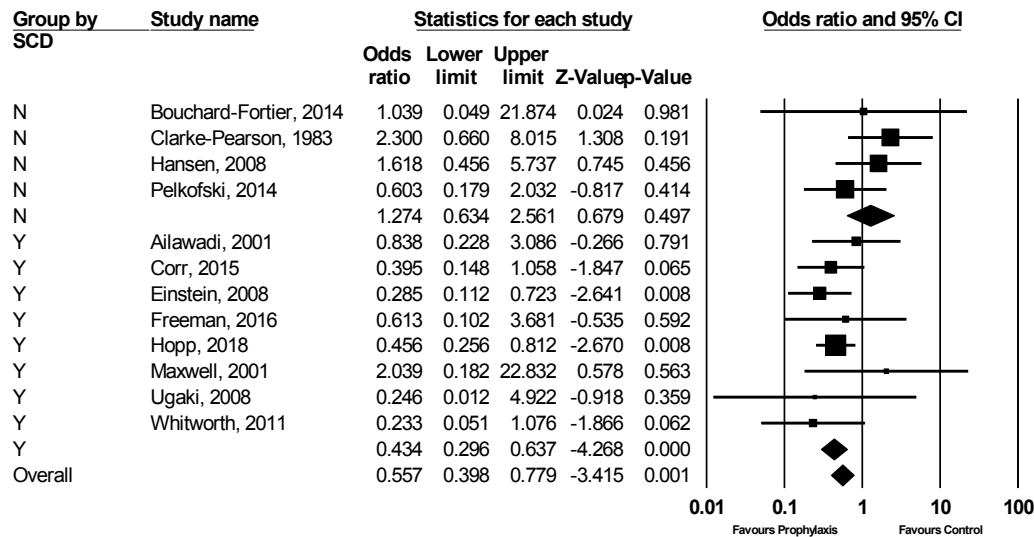
Figure 5. Forest plot of subgroup analysis comparing preoperative use of UFH versus LMWH as pre-operative chemoprophylaxis.



**Figure 6. Forest plot of subgroup analysis of VTE comparing pre-operative chemoprophylaxis by those studies that controlled for post-operative prophylaxis (equivalent post-operative care) and those that did not (non-equal post-operative care)**



**Figure 7. Forest plot of subgroup analysis of VTE by studies with concurrent use of sequential compression devices (SCD) or not.**



**Figure 8. Forest plot of subgroup analysis according to quality of studies**