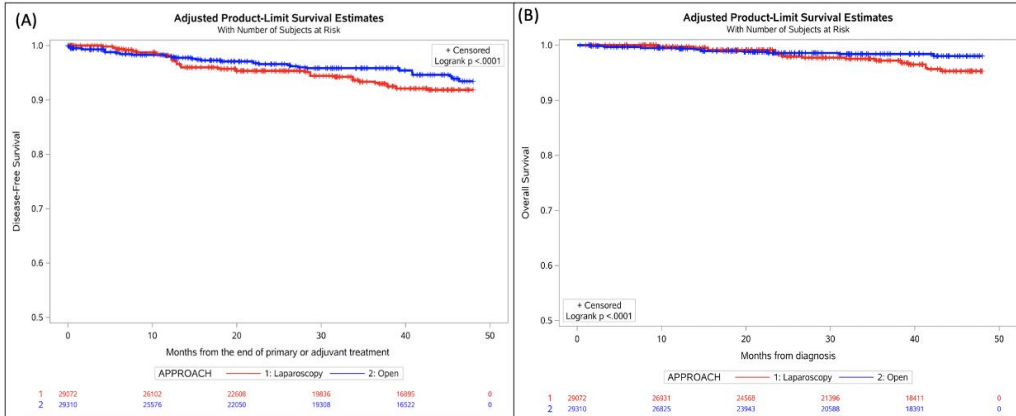


1 Supplementary material

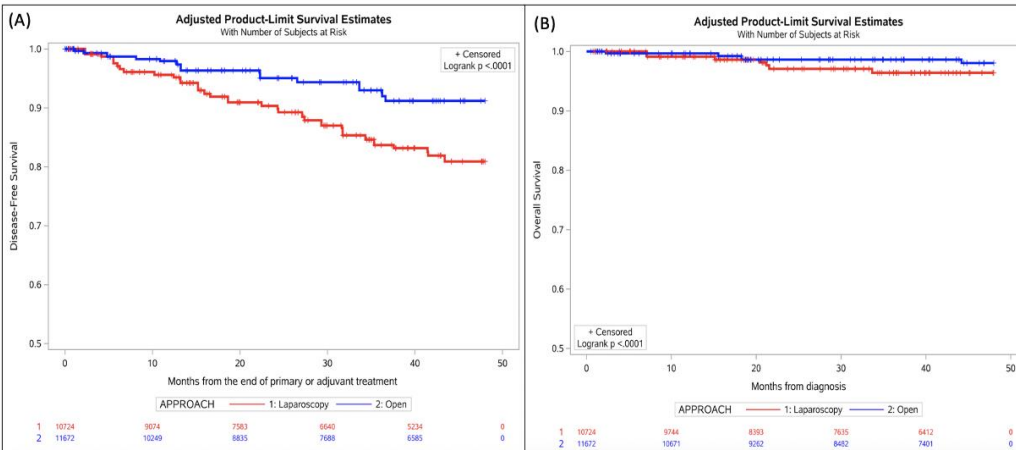
2

Preoperative tumor size \leq 2 cms



3

Preoperative tumor size > 2 cms



4

5

6

7

8

9

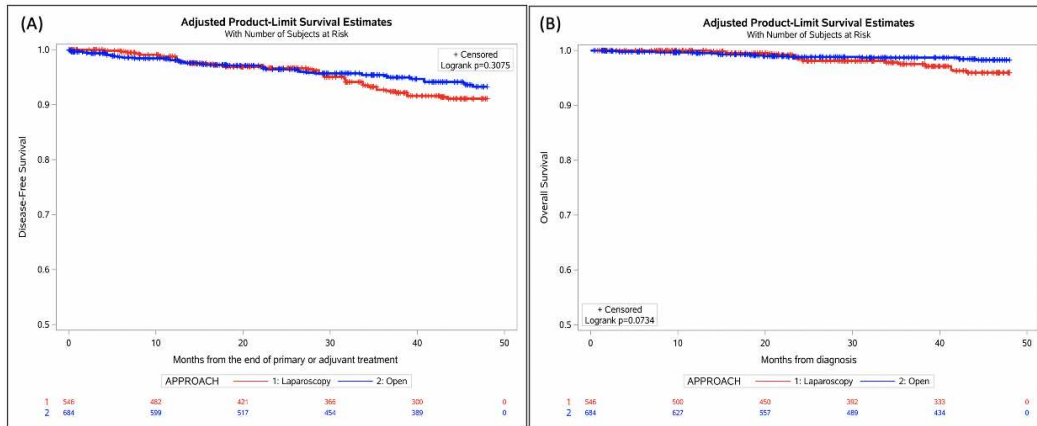
10

11

12

13

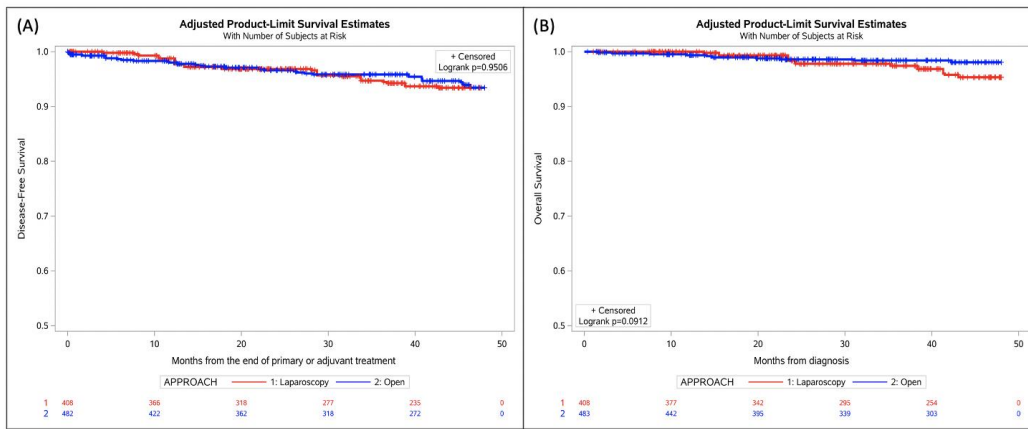
Figure S1. Inverse Probability of Treatment-Weighted Survival Curves according to surgical approach for tumor size and postconization residual disease (A) Disease-Free Survival. (B) Overall survival.



1
2
3
4
5
6
7
8
9
10
11
12
13
14
15
16
17
18
19
20
21
22
23
24
25
26
27
28
29
30
31
32
33
34
35
36
37

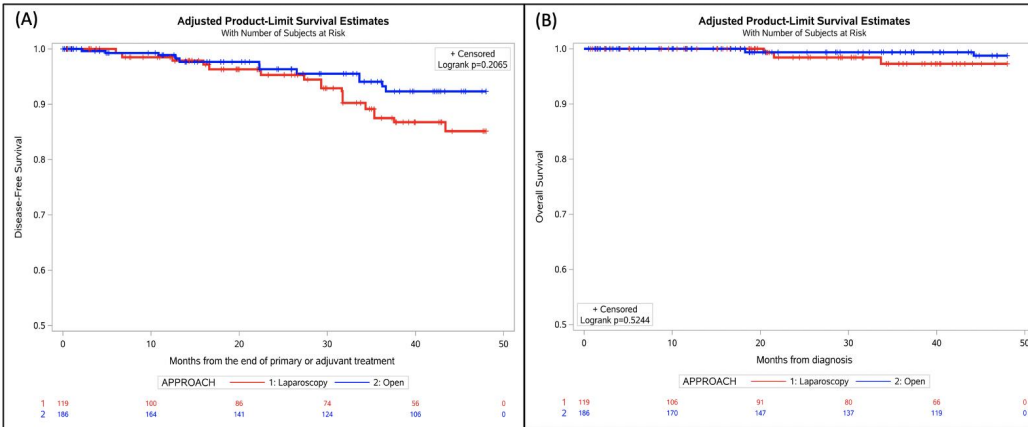
Figure S2. Inverse Probability of Treatment-Weighted Survival Curves according to surgical approach, including centers with more than 10 cases/year. (A) Disease-Free Survival. (B) Overall survival.

Preoperative tumor size ≤ 2 cms



1

Preoperative tumor size > 2 cms



2
3
4
5
6
7
8
9
10
11
12
13
14
15
16

Figure S3. Inverse Probability of Treatment–Weighted Survival Curves according to surgical approach for tumor size, including centers with more than 10 cases/year. (A) Disease-Free Survival. (B) Overall survival.

Institution	Laparoscopy n	Laparotomy n	Cases n (%)	Number of procedures/years
Instituto Nacional de Enfermedades Neoplasicas, Perú	142	242	384(27.7%)	32.0
Instituto Nacional de Cancerologia (INCAN), México	35	218	253(18.3%)	21.1
Instituto Nacional de Cancerologia, Colombia	118	128	246(17.8%)	20.5
Instituto de Cancerologia Las Americas, Colombia	179	53	232(16.8%)	19.3
Foundazione IRCCS Istituto Nazionale Tumori, Italia	82	43	125(9.0%)	10.4
Hospital Universitario La Paz, España	79	8	87(6.3%)	7.3
Hospital Italiano de Buenos Aires, Argentina	53	5	58(4.2%)	4.8
Total	688	697	1385 (100%)	16.48

Table S1. Number of procedures by approach in each institution.

1
2
3
4
5
6
7
8
9
10
11
12
13
14
15
16
17
18
19
20
21
22
23
24
25
26
27
28
29
30
31
32
33
34
35

Institution	Laparoscopy n(%)	Laparotomy n(%)	Total n (%)
Instituto Nacional de Enfermedades Neoplasicas, Perú	3(3.1)	2(2.0)	5(5.1)
Instituto Nacional de Cancerologia (INCAN), México	1(1.0)	16(16.3)	17(17.3)
Instituto Nacional de Cancerologia, Colombia	11(11.2)	10(10.2)	21(21.4)
Instituto de Cancerologia Las Americas, Colombia	9(9.2)	2(2.0)	11(11.2)
Foundazione IRCCS Istituto Nazionale Tumori, Italia	10(10.2)	3(3.1)	13(13.3)
Hospital Universitario La Paz, España	21(21.4)	2(2.0)	23(23.4)
Hospital Italiano de Buenos Aires, Argentina	8(8.2)	0(0.0)	8(8.2)
Total	63(64.3)	35(35.7)	98(100.0)

Table S2. Rate of recurrence in the centers (n=98)

1
2
3
4
5
6
7
8
9
10

1
2
3
4

Study	Stage	N after matching	Median follow-up (months)	OS (LRH/MIS vs ARH)	DFS or PFS or RFS (LRH/MIS vs ARH)
Melamed et al, 2018 [6]	IA2- IB1	1334 MIS/ 1340 ARH	45.0	HR 1.65 [95% CI 1.22-2.22]* All-cause mortality: <2 cm: HR 1.46 [95% CI 0.70-3.02] ≥2 cm: HR 1.66 [95% CI 1.19-2.30]	NI
Paik et al, 2019 [9]	IB-IIA	119 LRH/ 357 ARH < 2 cm: 62 LRH/186 ARH	63.9 69.1	HR 0.592 [95% CI 0.071-4.922] HR not calculated	DFS HR 2.738 [95% CI 1.326-5.650]* DFS HR 12.987 [95% CI 1.451-116.244]*
Kim SI et al, 2019 [11]	IB1-IB2 IB1	222 LRH/ 343 ARH ≤2 cm: 122 LRH/ 161 ARH	59.1 66.2	5-y OS 96.9% vs. 94.6% 5-y OS 96.4% vs. 98.6%	3-y PFS: 85.4% vs. 91.8%* 3-y PFS: 93.1% vs. 90.0%
Uppal et al, 2020 [12]	IA1 with LVSI, IA2, IB1	156 LRH/ 159 ARH ≤2 cm: 264	30.7 LRH vs 44.6 ARH	HR 0.60 [95% CI, 0.19-1.85]	RFS HR 2.83 [95% CI, 1.10-7.18]* aHR 6.31 [95% CI, 1.24 to 31.9]*
Hu et al, 2020 [17]	IA2, IB1, IIA1	406 LRH/ 406 ARH <2 cm: 147 LRH/ 147 ARH	60 (3-82)	HR 1.60 [95% CI 0.89-2.88] HR 0.59 [95% CI 0.11-3.13]	HR 1.65 [95% CI 1.00-2.73]* HR 0.71 [95% CI 0.24- 2.16]
Chen B et al, 2020 [19]	IA1 with LVSI- IIA2	879 RRH/ 879 ARH ≤2 cm: 982	24 RRH vs 48 ARH	HR 2.862 [95% CI 1.59-5.16*] HR 1.688 [95% CI 0.423-6.734]	HR 2.34 [95% CI 1.54-3.56]* HR 1.267 [95%CI 0.518-3.098]
Guo et al, 2020 [20]	IA1 with LVSI- IIA1	2439 MIS/ 813 ARH	90 (18-162)	All cohort 2-y HR 0.99 [95% CI 0.70-1.41] 5-y HR 1.20 [95% CI 0.79-1.83] IB1 Cohort 2-y RFS HR 1.87 [95% CI 1.03-3.40]* 5-y RFS HR, 2.57 [95% CI 1.29-5.10]*	All cohort 2-y RFS HR 1.04 [95% CI 0.76-1.42] 5-y RFS 1.12 [95% CI 0.76-1.65] IB1 Cohort 2-y RFS HR 1.81 [95% CI 1.09-3.0]* 5-y RFS HR, 2.17 [95% CI 1.21-3.89]*
Chiva et al, 2020 [21]	IB1	291 MIS/ 407 ARH	58 (0-83)	HR 2.45 [95% CI, 1.30-4.60]*	HR 2.07; [95% CI, 1.35-3.15]*
Rodriguez et al, 2020	IA1 with LVSI, IA2, IB1	681 LRH/ 698 ARH	52.1 LRH vs 52.6 ARH	4-y OS HR 2.04 [95%CI 1.00-4.16] After adjustment for adjuvant treatment 4-y OS HR 2.14 [95% IC 1.05-4.37]*	4-y DFS HR 1.64 [95% CI 1.09-2.46]* After adjustment for adjuvant treatment 4-y DFS HR 1.7 [95% CI 1.13-2.56]*

5 OS= Overall survival; DFS= Disease-free survival; PFS= Progression-free survival; RFS= Recurrence-free survival; LRH= Laparoscopic radical hysterectomy; MIS= Minimally invasive surgery; ARH= Abdominal radical hysterectomy; RRH= Robotic radical hysterectomy; LVSI= Lymphovascular invasion; y=year; NI= Not information
6
7
8 *p-value< 0.05
9

- 1 Table S3. Retrospective studies in which propensity score method was used for
- 2 analysis.
- 3
- 4