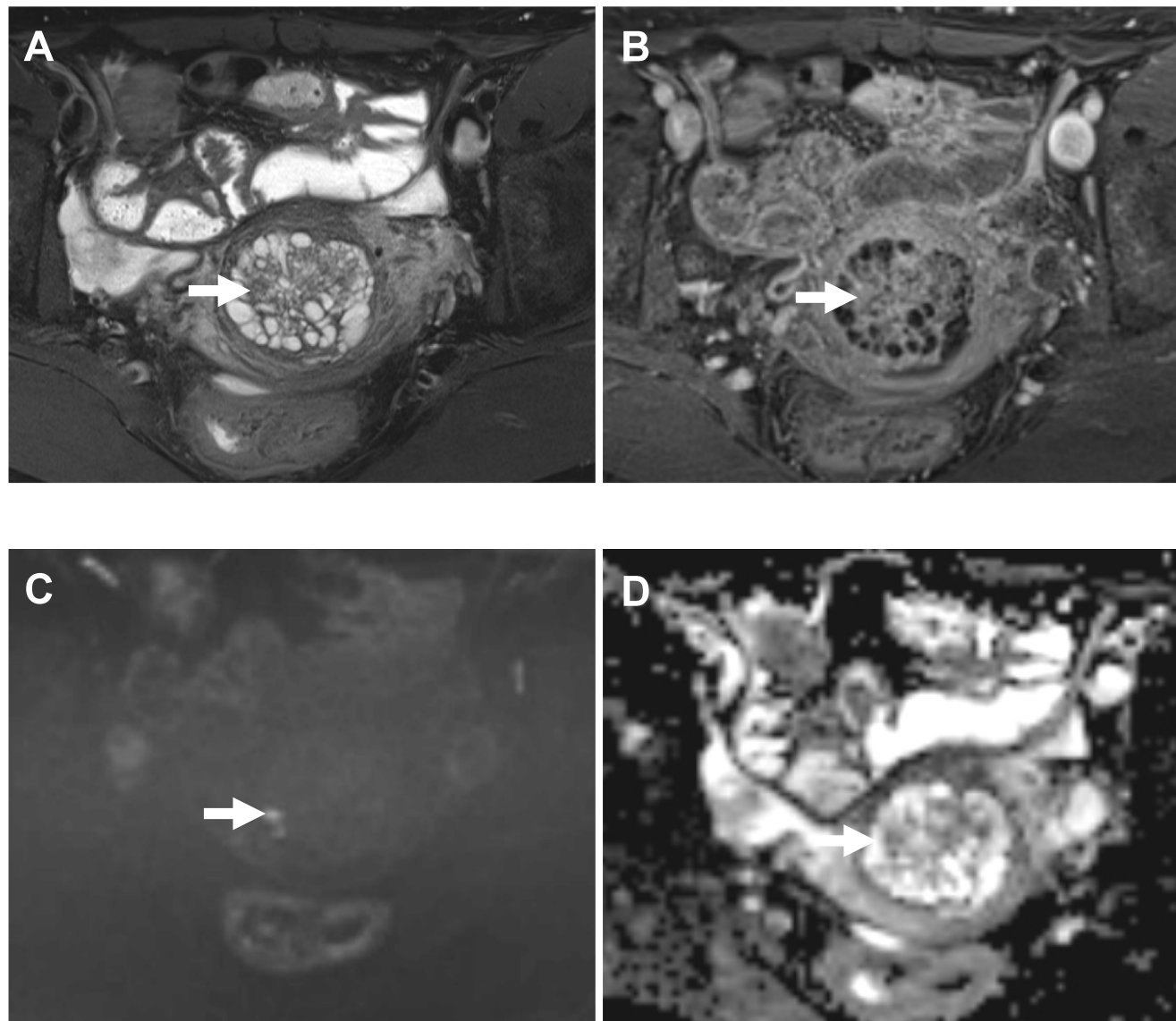


Supplementary Fig. 1



Supplementary Fig. 1

Case No. 36 in Table 4. Axial sections of pelvic magnetic resonance image (MRI). **A** and **B**: T2-weighted image (WI) with Fat-saturation (Fat-Sat) (**A**) and gadolinium-enhanced T1-WI with Fat-Sat (**B**). MRI showed a cosmos pattern but lacked in a predominant solid component or invasive lesion. **C** and **D**: A diffusion-weighted image (DWI) (**C**) and apparent diffusion coefficient (ADC) map (**D**). The lesion showed a high signal intensity on DWI and a decreased intensity on ADC map, suggesting malignancy (white arrow). But no malignant tissue was detected in this case.