

Bevacizumab, carboplatin and paclitaxel in the first line treatment of advanced ovarian cancer patients. The phase IV MITO-16A/MaNGO-OV2A study.

Appendix

Figure A1. Study flow.....	2
Figure A2. Reverse Kaplan Meier follow up curve.....	2
Figure A3. PFS and OS Kaplan-Meier curves	4
Figure A4. PFS (left) and OS (right) Kaplan Meier curves according to stage of disease	4
Figure A5. PFS (left) and OS (right) Kaplan Meier curves according to ECOG performance status	6
Figure A6. PFS (left) and OS (right) Kaplan Meier curves according to residual disease after initial debulking surgery	7
Figure A7. PFS (left) and OS (right) Kaplan Meier curves according to baseline hypertension/antihypertensive treatment	8
Figure A8. PFS (left) and OS (right) Simon and Makush's modified Kaplan Meier curves according to occurrence of hypertension (grade ≥ 2) during treatment. Inner graph: cumulative frequency of hypertension (grade ≥ 2)	9
Table A1: Adverse events occurring in <5% of patients, ordered by CTCAE category and grade	10
Table A2. Summary of compliance	14
List of participating Institutions, physicians, nurses and trial coordinators/data managers	15

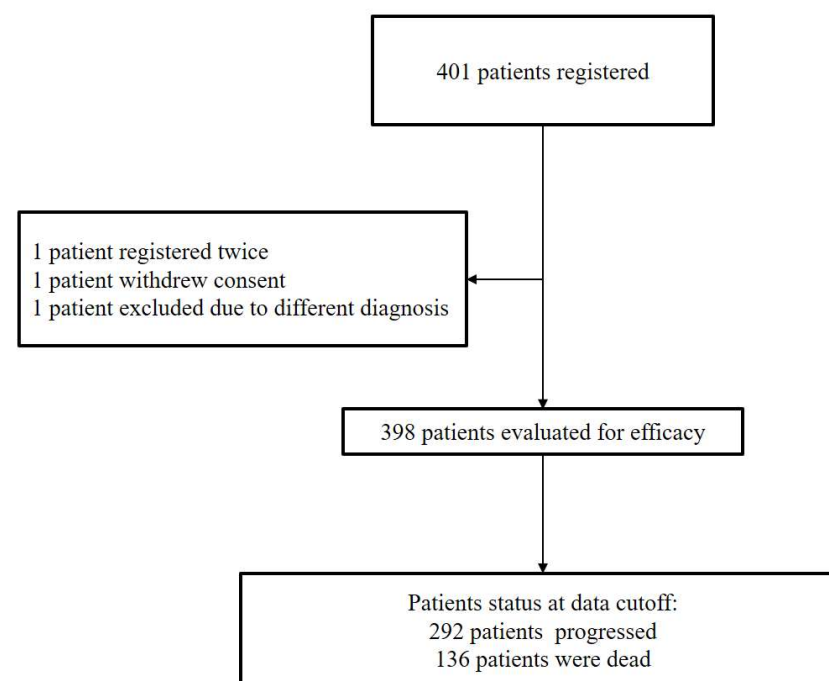
Figure A1. Study flow

Figure A2. Reverse Kaplan Meier follow up curve

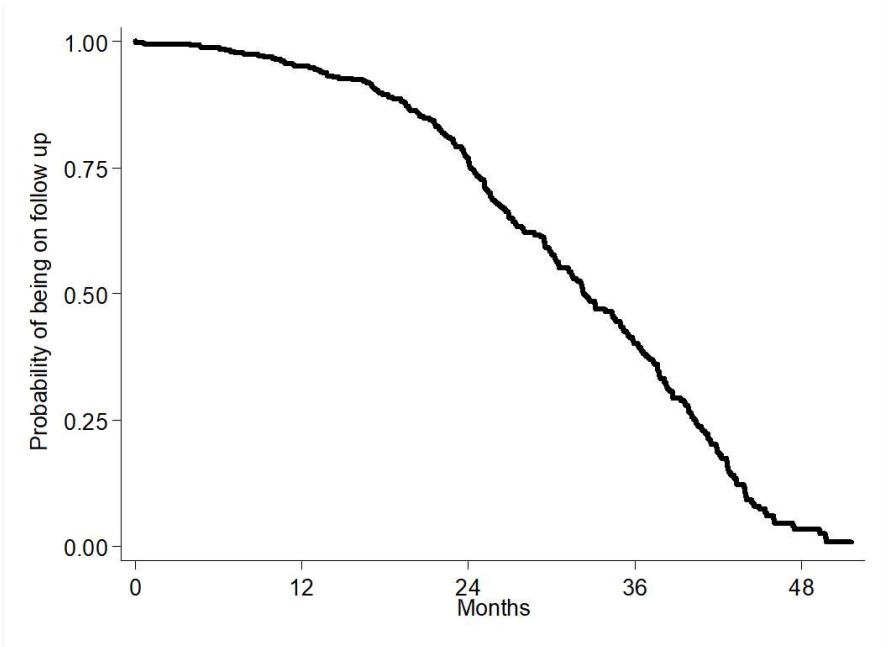


Figure A3. PFS and OS Kaplan-Meier curves

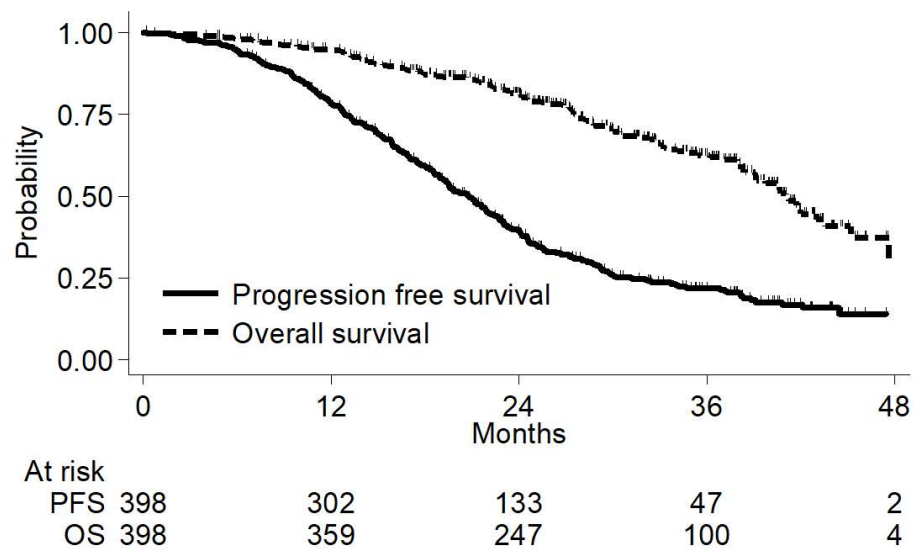


Figure A4. PFS (left) and OS (right) Kaplan Meier curves according to stage of disease

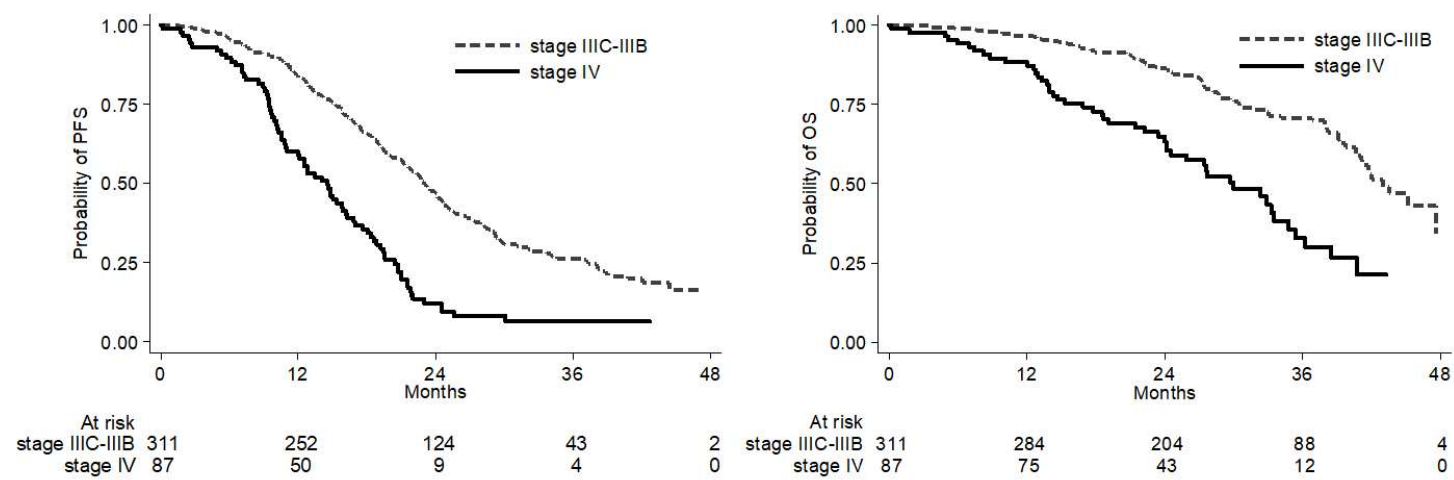


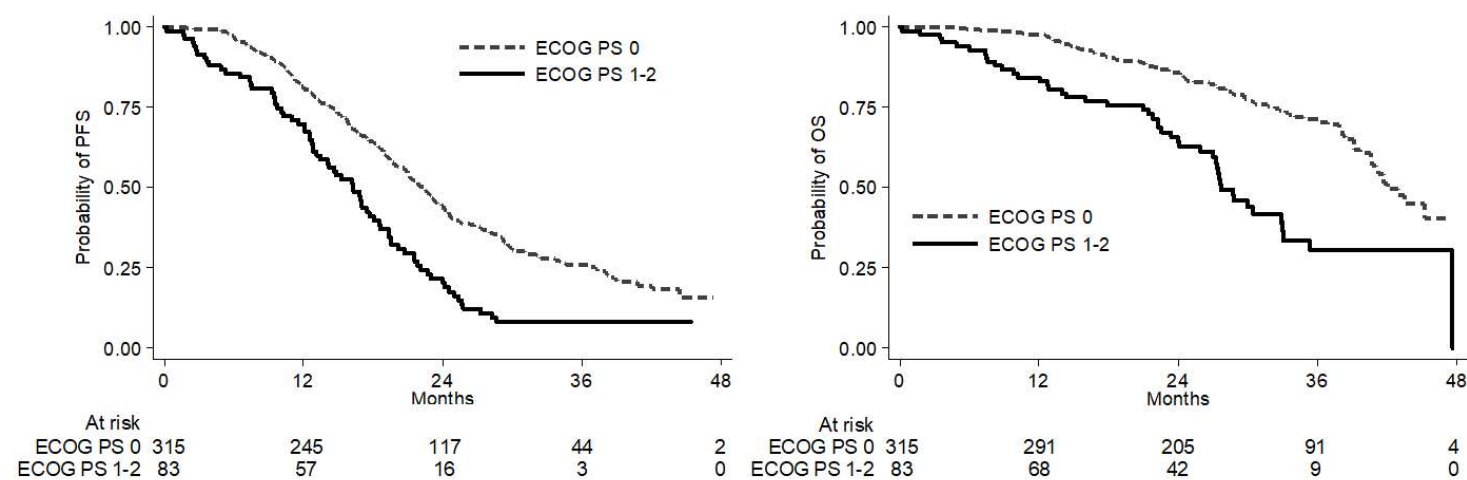
Figure A5. PFS (left) and OS (right) Kaplan Meier curves according to ECOG performance status

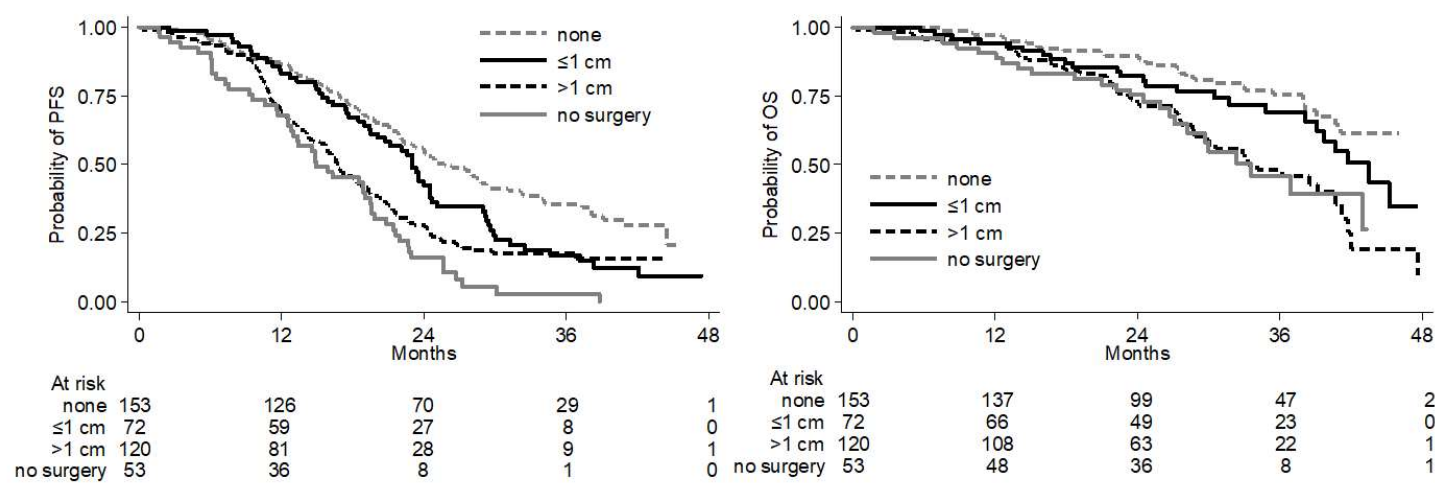
Figure A6. PFS (left) and OS (right) Kaplan Meier curves according to residual disease after initial debulking surgery

Figure A7. PFS (left) and OS (right) Kaplan Meier curves according to baseline hypertension/antihypertensive treatment

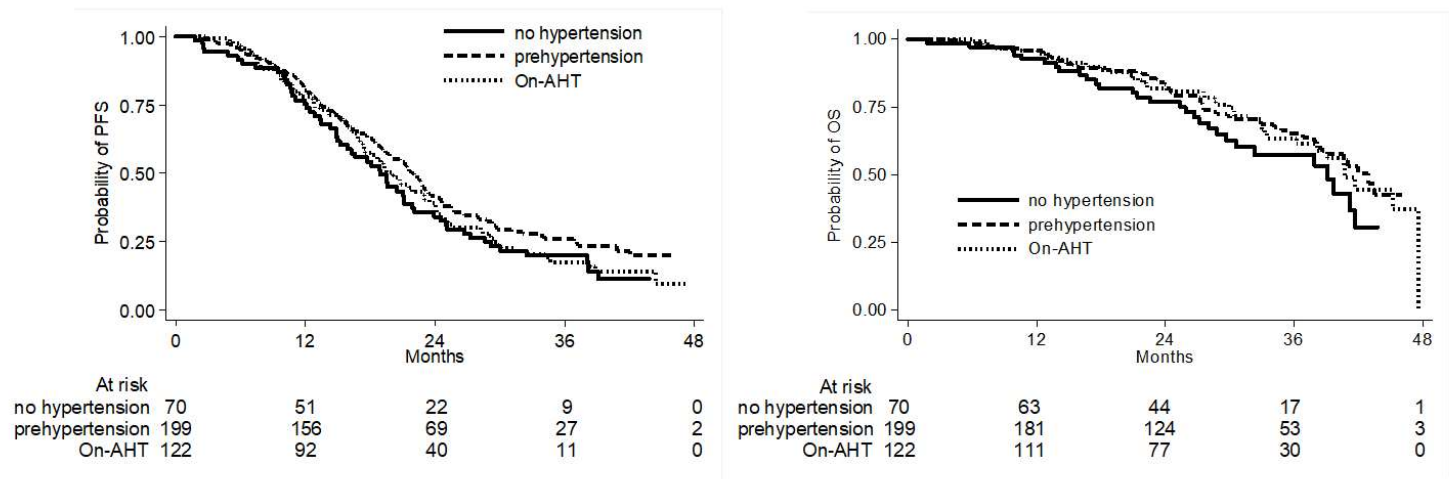


Figure A8. PFS (left) and OS (right) Simon and Makush's modified Kaplan Meier curves according to occurrence of hypertension (grade ≥ 2) during treatment. Inner graph: cumulative frequency of hypertension (grade ≥ 2)

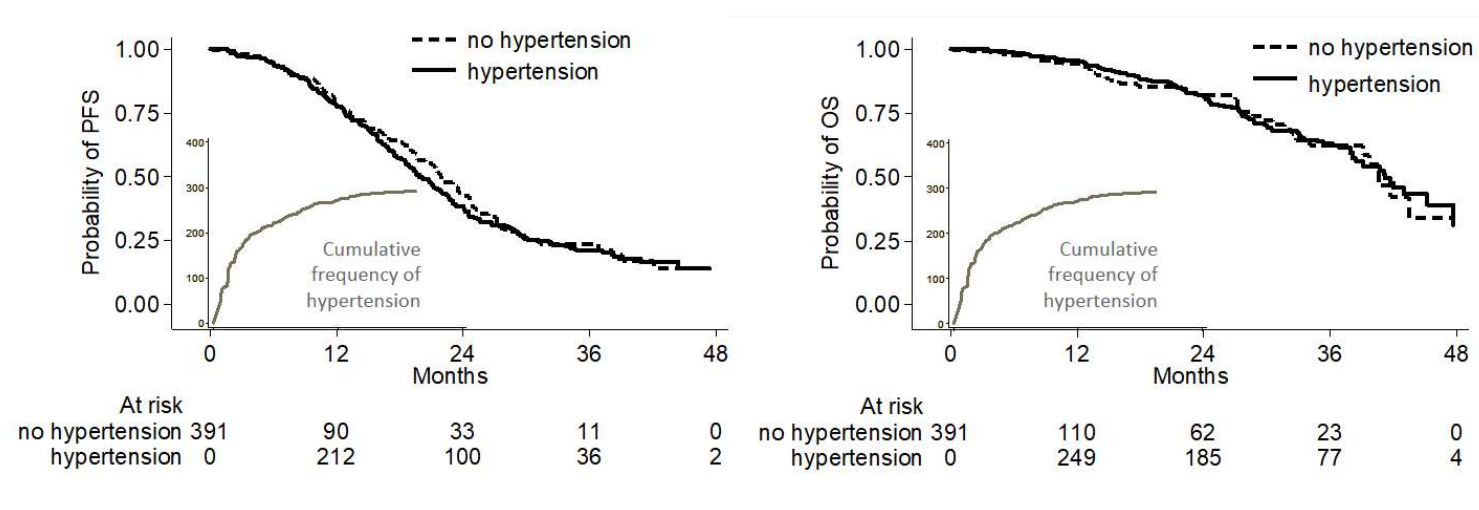


Table A1: Adverse events occurring in <5% of patients, ordered by CTCAE category and grade

Adverse event	Grade 1		Grade 2		Grade 3		Grade 4	
	n	(%)	n	(%)	n	(%)	n	(%)
BLOOD AND LYMPHATIC SYSTEM								
Leukocytosis	0	(0.0)	0	(0.0)	2	(0.5)	0	(0.0)
Other	3	(0.8)	1	(0.3)	0	(0.0)	0	(0.0)
Febrile neutropenia	0	(0.0)	0	(0.0)	5	(1.3)	7	(1.8)
CARDIAC								
Myocardial infarction	0	(0.0)	0	(0.0)	1	(0.3)	0	(0.0)
Sinus bradycardia	1	(0.3)	0	(0.0)	0	(0.0)	0	(0.0)
Heart failure	1	(0.3)	0	(0.0)	1	(0.3)	0	(0.0)
Sinus tachycardia	1	(0.3)	1	(0.3)	0	(0.0)	0	(0.0)
Left ventricular systolic dysfunction	0	(0.0)	0	(0.0)	3	(0.8)	0	(0.0)
Atrial fibrillation	1	(0.3)	2	(0.5)	1	(0.3)	0	(0.0)
Palpitations	5	(1.3)	0	(0.0)	0	(0.0)	0	(0.0)
Other	6	(1.5)	0	(0.0)	1	(0.3)	0	(0.0)
EAR AND LABYRINTH								
Ear pain	1	(0.3)	0	(0.0)	0	(0.0)	0	(0.0)
Tinnitus	1	(0.3)	0	(0.0)	0	(0.0)	0	(0.0)
Other	2	(0.5)	2	(0.5)	0	(0.0)	0	(0.0)
Vertigo	10	(2.6)	1	(0.3)	0	(0.0)	0	(0.0)
ENDOCRINE								
Other	1	(0.3)	0	(0.0)	0	(0.0)	0	(0.0)
EYE								
Conjunctivitis	1	(0.3)	0	(0.0)	0	(0.0)	0	(0.0)
Dry eye	1	(0.3)	0	(0.0)	0	(0.0)	0	(0.0)
Extraocular muscle paresis	1	(0.3)	0	(0.0)	0	(0.0)	0	(0.0)
Optic nerve disorder	0	(0.0)	1	(0.3)	0	(0.0)	0	(0.0)
Watering eyes	2	(0.5)	0	(0.0)	0	(0.0)	0	(0.0)
Blurred vision	1	(0.3)	3	(0.8)	0	(0.0)	0	(0.0)
Eye disorders - Other, specify	7	(1.8)	2	(0.5)	0	(0.0)	0	(0.0)
GASTROINTESTINAL								
Anal fistula	0	(0.0)	0	(0.0)	1	(0.3)	0	(0.0)
Anal hemorrhage	0	(0.0)	1	(0.3)	0	(0.0)	0	(0.0)
Anal pain	1	(0.3)	0	(0.0)	0	(0.0)	0	(0.0)
Anal ulcer	0	(0.0)	1	(0.3)	0	(0.0)	0	(0.0)
Gastric fistula	1	(0.3)	0	(0.0)	0	(0.0)	0	(0.0)
Gastric hemorrhage	0	(0.0)	1	(0.3)	0	(0.0)	0	(0.0)
Gastroesophageal reflux disease	1	(0.3)	0	(0.0)	0	(0.0)	0	(0.0)
Gastrointestinal fistula	0	(0.0)	0	(0.0)	1	(0.3)	0	(0.0)
Gingival pain	0	(0.0)	1	(0.3)	0	(0.0)	0	(0.0)
Hemorrhoids	0	(0.0)	1	(0.3)	0	(0.0)	0	(0.0)
Ileal stenosis	0	(0.0)	0	(0.0)	1	(0.3)	0	(0.0)
Periodontal disease	1	(0.3)	0	(0.0)	0	(0.0)	0	(0.0)
Rectal pain	0	(0.0)	1	(0.3)	0	(0.0)	0	(0.0)
Toothache	0	(0.0)	1	(0.3)	0	(0.0)	0	(0.0)
Upper gastrointestinal hemorrhage	1	(0.3)	0	(0.0)	0	(0.0)	0	(0.0)
Colitis	2	(0.5)	0	(0.0)	0	(0.0)	0	(0.0)
Flatulence	2	(0.5)	0	(0.0)	0	(0.0)	0	(0.0)
Rectal hemorrhage	1	(0.3)	1	(0.3)	0	(0.0)	0	(0.0)
Small intestinal obstruction	0	(0.0)	0	(0.0)	2	(0.5)	0	(0.0)
Small intestinal perforation	0	(0.0)	1	(0.3)	1	(0.3)	0	(0.0)
Stomach pain	1	(0.3)	1	(0.3)	0	(0.0)	0	(0.0)
Abdominal distension	2	(0.5)	1	(0.3)	0	(0.0)	0	(0.0)
Ascites	1	(0.3)	1	(0.3)	1	(0.3)	0	(0.0)
Colonic obstruction	0	(0.0)	1	(0.3)	3	(0.8)	0	(0.0)
Gastritis	2	(0.5)	2	(0.5)	0	(0.0)	0	(0.0)
Dyspepsia	6	(1.5)	0	(0.0)	0	(0.0)	0	(0.0)

Adverse event	Grade 1		Grade 2		Grade 3		Grade 4	
	n	(%)	n	(%)	n	(%)	n	(%)
Gastrointestinal pain	4	(1.0)	2	(0.5)	0	(0.0)	0	(0.0)
GENERAL DISORDERS								
Localized edema	0	(0.0)	1	(0.3)	0	(0.0)	0	(0.0)
Flu like symptoms	2	(0.5)	0	(0.0)	0	(0.0)	0	(0.0)
Edema limbs	3	(0.8)	1	(0.3)	0	(0.0)	0	(0.0)
HEPATOBIILIARY								
Cholecystitis	0	(0.0)	0	(0.0)	1	(0.3)	0	(0.0)
Hepatic pain	1	(0.3)	0	(0.0)	0	(0.0)	0	(0.0)
IMMUNE SYSTEM								
Other	0	(0.0)	1	(0.3)	0	(0.0)	0	(0.0)
INFECTIONS AND INFESTATIONS								
Abdominal infection	0	(0.0)	0	(0.0)	0	(0.0)	1	(0.3)
Anorectal infection	0	(0.0)	1	(0.3)	0	(0.0)	0	(0.0)
Bronchial infection	0	(0.0)	1	(0.3)	0	(0.0)	0	(0.0)
Device related infection	0	(0.0)	0	(0.0)	1	(0.3)	0	(0.0)
Nail infection	1	(0.3)	0	(0.0)	0	(0.0)	0	(0.0)
Paronychia	0	(0.0)	1	(0.3)	0	(0.0)	0	(0.0)
Peritoneal infection	0	(0.0)	0	(0.0)	1	(0.3)	0	(0.0)
Pharyngitis	0	(0.0)	1	(0.3)	0	(0.0)	0	(0.0)
Rhinitis infective	0	(0.0)	1	(0.3)	0	(0.0)	0	(0.0)
Sinusitis	0	(0.0)	1	(0.3)	0	(0.0)	0	(0.0)
Small intestine infection	0	(0.0)	0	(0.0)	1	(0.3)	0	(0.0)
Tooth infection	0	(0.0)	1	(0.3)	0	(0.0)	0	(0.0)
Bladder infection	0	(0.0)	2	(0.5)	0	(0.0)	0	(0.0)
Breast infection	0	(0.0)	2	(0.5)	0	(0.0)	0	(0.0)
Catheter related infection	0	(0.0)	2	(0.5)	0	(0.0)	0	(0.0)
Upper respiratory infection	0	(0.0)	2	(0.5)	0	(0.0)	0	(0.0)
Vulval infection	0	(0.0)	1	(0.3)	1	(0.3)	0	(0.0)
Wound infection	0	(0.0)	1	(0.3)	1	(0.3)	0	(0.0)
Sepsis	0	(0.0)	0	(0.0)	0	(0.0)	3	(0.8)
Skin infection	2	(0.5)	2	(0.5)	0	(0.0)	0	(0.0)
Other	5	(1.3)	9	(2.3)	1	(0.3)	0	(0.0)
INJURY, POISONING AND PROCEDURAL COMPLICATIONS								
Postoperative hemorrhage	1	(0.3)	0	(0.0)	0	(0.0)	0	(0.0)
Urostomy obstruction	0	(0.0)	0	(0.0)	1	(0.3)	0	(0.0)
Fracture	0	(0.0)	0	(0.0)	2	(0.5)	0	(0.0)
Wound dehiscence	3	(0.8)	0	(0.0)	0	(0.0)	0	(0.0)
INVESTIGATIONS								
Cholesterol high	1	(0.3)	0	(0.0)	0	(0.0)	0	(0.0)
Lymphocyte count decreased	0	(0.0)	0	(0.0)	1	(0.3)	0	(0.0)
Urine output decreased	0	(0.0)	0	(0.0)	0	(0.0)	1	(0.3)
Weight gain	1	(0.3)	0	(0.0)	0	(0.0)	0	(0.0)
Blood bilirubin increased	5	(1.3)	1	(0.3)	0	(0.0)	0	(0.0)
GGT increased	4	(1.0)	0	(0.0)	2	(0.5)	0	(0.0)
Creatinine increased	8	(2.0)	1	(0.3)	0	(0.0)	0	(0.0)
Investigations - Other, specify	9	(2.3)	1	(0.3)	1	(0.3)	0	(0.0)
Weight loss	7	(1.8)	5	(1.3)	2	(0.5)	0	(0.0)
Alkaline phosphatase increased	15	(3.8)	2	(0.5)	1	(0.3)	0	(0.0)
METABOLISM AND NUTRITION								
Hypertriglyceridemia	1	(0.3)	0	(0.0)	0	(0.0)	0	(0.0)
Hypocalcemia	1	(0.3)	0	(0.0)	0	(0.0)	0	(0.0)
Hyponatremia	1	(0.3)	0	(0.0)	0	(0.0)	0	(0.0)
Dehydration	1	(0.3)	0	(0.0)	1	(0.3)	0	(0.0)
Hypercalcemia	2	(0.5)	0	(0.0)	0	(0.0)	0	(0.0)
Hyperkalemia	2	(0.5)	0	(0.0)	0	(0.0)	0	(0.0)
Hypoglycemia	2	(0.5)	0	(0.0)	0	(0.0)	0	(0.0)
Hypokalemia	2	(0.5)	0	(0.0)	0	(0.0)	0	(0.0)
Hypoalbuminemia	3	(0.8)	0	(0.0)	0	(0.0)	0	(0.0)

Adverse event	Grade 1		Grade 2		Grade 3		Grade 4	
	n	(%)	n	(%)	n	(%)	n	(%)
Metabolism and nutrition disorders - Other, specify	2	(0.5)	1	(0.3)	0	(0.0)	0	(0.0)
Hyperuricemia	4	(1.0)	0	(0.0)	0	(0.0)	0	(0.0)
Hypomagnesemia	10	(2.6)	0	(0.0)	0	(0.0)	0	(0.0)
MUSCULOSKELETAL AND CONNECTIVE TISSUE								
Joint effusion	1	(0.3)	0	(0.0)	0	(0.0)	0	(0.0)
Osteonecrosis of jaw	0	(0.0)	1	(0.3)	0	(0.0)	0	(0.0)
Chest wall pain	2	(0.5)	0	(0.0)	0	(0.0)	0	(0.0)
Neck pain	1	(0.3)	1	(0.3)	0	(0.0)	0	(0.0)
Generalized muscle weakness	2	(0.5)	1	(0.3)	0	(0.0)	0	(0.0)
Muscle weakness lower limb	2	(0.5)	1	(0.3)	0	(0.0)	0	(0.0)
Back pain	3	(0.8)	1	(0.3)	0	(0.0)	0	(0.0)
Osteoporosis	4	(1.0)	0	(0.0)	0	(0.0)	0	(0.0)
Pain in extremity	7	(1.8)	0	(0.0)	0	(0.0)	0	(0.0)
Arthritis	8	(2.0)	5	(1.3)	0	(0.0)	0	(0.0)
Bone pain	15	(3.8)	1	(0.3)	0	(0.0)	0	(0.0)
NEOPLASMS BENIGN, MALIGNANT AND UNSPECIFIED								
Other	0	(0.0)	0	(0.0)	2	(0.5)	1	(0.3)
NERVOUS SYSTEM								
Aphonia	0	(0.0)	0	(0.0)	1	(0.3)	0	(0.0)
Cognitive disturbance	0	(0.0)	0	(0.0)	1	(0.3)	0	(0.0)
Depressed level of consciousness	1	(0.3)	0	(0.0)	0	(0.0)	0	(0.0)
Intracranial hemorrhage	0	(0.0)	0	(0.0)	1	(0.3)	0	(0.0)
Presyncope	0	(0.0)	1	(0.3)	0	(0.0)	0	(0.0)
Somnolence	1	(0.3)	0	(0.0)	0	(0.0)	0	(0.0)
Dizziness	2	(0.5)	0	(0.0)	0	(0.0)	0	(0.0)
Memory impairment	1	(0.3)	1	(0.3)	0	(0.0)	0	(0.0)
Transient ischemic attacks	3	(0.8)	0	(0.0)	0	(0.0)	0	(0.0)
Dysgeusia	5	(1.3)	1	(0.3)	0	(0.0)	0	(0.0)
Other	8	(2.0)	7	(1.8)	0	(0.0)	0	(0.0)
PSYCHIATRIC								
Depression	2	(0.5)	1	(0.3)	0	(0.0)	0	(0.0)
Insomnia	2	(0.5)	1	(0.3)	0	(0.0)	0	(0.0)
Psychiatric disorders - Other, specify	2	(0.5)	2	(0.5)	0	(0.0)	0	(0.0)
Anxiety	3	(0.8)	2	(0.5)	0	(0.0)	0	(0.0)
RENAL AND URINARY								
Acute kidney injury	1	(0.3)	0	(0.0)	0	(0.0)	0	(0.0)
Renal calculi	1	(0.3)	0	(0.0)	0	(0.0)	0	(0.0)
Renal colic	0	(0.0)	1	(0.3)	0	(0.0)	0	(0.0)
Urinary tract obstruction	0	(0.0)	0	(0.0)	1	(0.3)	0	(0.0)
Hematuria	1	(0.3)	0	(0.0)	1	(0.3)	0	(0.0)
Hemoglobinuria	2	(0.5)	0	(0.0)	0	(0.0)	0	(0.0)
Urinary tract pain	1	(0.3)	1	(0.3)	0	(0.0)	0	(0.0)
Urinary incontinence	3	(0.8)	0	(0.0)	0	(0.0)	0	(0.0)
Cystitis noninfective	3	(0.8)	1	(0.3)	0	(0.0)	0	(0.0)
Urinary frequency	3	(0.8)	1	(0.3)	0	(0.0)	0	(0.0)
REPRODUCTIVE SYSTEM AND BREAST DISORDERS								
Pelvic pain	1	(0.3)	0	(0.0)	0	(0.0)	0	(0.0)
Vaginal discharge	1	(0.3)	0	(0.0)	0	(0.0)	0	(0.0)
Reproductive system and breast disorders - Other, specify	1	(0.3)	1	(0.3)	0	(0.0)	0	(0.0)
Vaginal fistula	0	(0.0)	1	(0.3)	1	(0.3)	0	(0.0)
Vaginal hemorrhage	4	(1.0)	1	(0.3)	0	(0.0)	0	(0.0)

Adverse event	Grade 1		Grade 2		Grade 3		Grade 4	
	n	(%)	n	(%)	n	(%)	n	(%)
RESPIRATORY. THORACIC AND MEDIASTINAL								
Allergic rhinitis	1	(0.3)	0	(0.0)	0	(0.0)	0	(0.0)
Bronchospasm	0	(0.0)	0	(0.0)	1	(0.3)	0	(0.0)
Pharyngeal hemorrhage	1	(0.3)	0	(0.0)	0	(0.0)	0	(0.0)
Pharyngeal mucositis	0	(0.0)	1	(0.3)	0	(0.0)	0	(0.0)
Pharyngolaryngeal pain	1	(0.3)	0	(0.0)	0	(0.0)	0	(0.0)
Pneumothorax	0	(0.0)	0	(0.0)	1	(0.3)	0	(0.0)
Sinus disorder	1	(0.3)	0	(0.0)	0	(0.0)	0	(0.0)
Bronchial obstruction	0	(0.0)	2	(0.5)	0	(0.0)	0	(0.0)
Voice alteration	2	(0.5)	0	(0.0)	0	(0.0)	0	(0.0)
Pneumonitis	0	(0.0)	3	(0.8)	0	(0.0)	0	(0.0)
Dyspnea	6	(1.5)	1	(0.3)	1	(0.3)	0	(0.0)
Cough	13	(3.3)	4	(1.0)	0	(0.0)	0	(0.0)
SKIN AND SUBCUTANEOUS TISSUE								
Hirsutism	1	(0.3)	0	(0.0)	0	(0.0)	0	(0.0)
Hypertrichosis	1	(0.3)	0	(0.0)	0	(0.0)	0	(0.0)
Nail loss	1	(0.3)	0	(0.0)	0	(0.0)	0	(0.0)
Palmar-plantar erythrodysesthesia syndrome	1	(0.3)	0	(0.0)	0	(0.0)	0	(0.0)
Purpura	1	(0.3)	0	(0.0)	0	(0.0)	0	(0.0)
Skin hyperpigmentation	1	(0.3)	0	(0.0)	0	(0.0)	0	(0.0)
Nail discoloration	2	(0.5)	0	(0.0)	0	(0.0)	0	(0.0)
Pain of skin	2	(0.5)	0	(0.0)	0	(0.0)	0	(0.0)
Dry skin	3	(0.8)	0	(0.0)	0	(0.0)	0	(0.0)
Urticaria	2	(0.5)	0	(0.0)	1	(0.3)	0	(0.0)
Skin ulceration	2	(0.5)	1	(0.3)	1	(0.3)	0	(0.0)
Rash maculo-papular	4	(1.0)	1	(0.3)	0	(0.0)	0	(0.0)
Erythema multiforme	3	(0.8)	3	(0.8)	0	(0.0)	0	(0.0)
Rash acneiform	4	(1.0)	3	(0.8)	0	(0.0)	0	(0.0)
Pruritus	11	(2.8)	2	(0.5)	0	(0.0)	0	(0.0)
SURGICAL AND MEDICAL PROCEDURES								
Other	1	(0.3)	1	(0.3)	3	(0.8)	0	(0.0)
VASCULAR								
Lymphocele	0	(0.0)	0	(0.0)	1	(0.3)	0	(0.0)
Lymphedema	2	(0.5)	1	(0.3)	0	(0.0)	0	(0.0)
Superficial thrombophlebitis	0	(0.0)	3	(0.8)	0	(0.0)	0	(0.0)
Hot flashes	4	(1.0)	0	(0.0)	0	(0.0)	0	(0.0)
Phlebitis	0	(0.0)	6	(1.5)	0	(0.0)	0	(0.0)
Hypotension	9	(2.3)	1	(0.3)	0	(0.0)	0	(0.0)
Other	7	(1.8)	3	(0.8)	0	(0.0)	0	(0.0)

Table A2. Summary of compliance

	Carboplatin	Paclitaxel	Bevacizumab (combined)	Bevacizumab (maintenance)
Started treatment	398	396	396	344
Number of cycles received, median (IQR)	6 (6-6)	6 (6-6)	6 (5-6)	15.5 (9-16)
Administered total dose, median (IQR)	29.7 (27.4-30.0) AUC	1040 (967.2-1050) mg/kg	87 (72-90) mg/kg	227 (135-240) mg/kg
Weekly dose intensity, median (IQR)	1.5 AUC/week (1.2-1.6)	52.1 mg/kg/week (43.2-55.9)	4.1 (3.1-4.7) mg/kg/week	4.8 (4.5-5) mg/kg/week
Relative weekly dose intensity, median	89%	89%	82%	96%

List of participating Institutions, physicians, nurses and trial coordinators/data managers

Institution	Physicians	Nurses	Trial coordinators, data managers
Dipartimento di chirurgia, SC Chirurgia Ginecologica, Fondazione IRCCS Istituto Nazionale Tumori, Milano	Francesco Raspagliesi, Giorgio Bogani, Domenica Lorusso		Dominique Ronzulli, Antonia Martinetti, Elisa Sottotetti
Dipartimento di scienze della salute della donna, del bambino e di sanità pubblica, Ginecologia Oncologica, Fondazione Policlinico Universitario Gemelli, Università Cattolica del Sacro Cuore, Roma	Giovanni Scambia, Vanda Salutari, Mariagrazia Distefano		
Oncologia Clinica Sperimentale Uro-Ginecologica, Ginecologia Oncologica, Istituto Nazionale Tumori, IRCCS Fondazione G.Pascale, Napoli	Sandro Pignata, Carmela Pisano, Sabrina Chiara Cecere, Laura Attademo, Sara Centonze, Iole Ventriglia, Stefano Greggi		Patrizia Piccirillo
Istituto Europeo di Oncologia IRCCS, and Dipartimento di Medicina e Chirurgia, Università degli Studi di Milano-Bicocca, Milano	Nicoletta Colombo, Eleonora Zaccarelli	Ada Sbriglia	Abbondanza Montinaro
Oncologia Medica II e Radiologia, Istituto Oncologico Veneto IRCCS, and University of Padova	Simona Frezzini, Margherita Nardin	Elena Marchi, Chiara Lando	
Divisione di Ostetricia e Ginecologia, ASST Spedali Civili di Brescia, Università di Brescia	Germana Tognon, Martina Ratti	Rosangela Guerini	Eliana Bignotti
Oncologia ed Ematologia U.L.S.S. 13, Mirano (VE)	Grazia Artioli, Lucia Borgato		Silvia Coccato
Dipartimento di Medicina Clinica e Sperimentale, UO Ginecologia e Ostetricia, Università di Pisa	Angiolo Gadducci, Stefania Cosio		
Oncologia Medica, Dipartimento di Medicina Clinica e Chirurgia Università di Napoli Federico II, Napoli	Rossella Lauria, Cinzia Cardalesi, Carmine De Angelis, Michela Izzo		
Divisione Universitaria di Ginecologia e Ostetricia, AO Ordine Mauriziano, Torino	Annamaria Ferrero, Elisa Tripodi, Valentina Zanfagnin		
Oncologia Medica, Ospedale Senatore Antonio Perrino, Brindisi	Saverio Cinieri, Enrica Mazzoni, Gabriella Del Bene, Maria D'Amico	Liana Falcone	Margherita Cinefra
Oncologia Medica, Ospedali Galliera, Genova	Andrea De Censi		Domenico Marra, Silvia Caviglia
Dipartimento di Oncologia, Ospedale S. Giovanni Calibita Fatebenefratelli, Roma	Enrico Breda		

Institution	Physicians	Nurses	Trial coordinators, data managers
Divisione di Ostetricia e Ginecologia, Ospedale Cannizzaro, Catania	Paolo Scollo		
Oncologia Medica, Istituto Scientifico Romagnolo per lo Studio e la Cura dei Tumori (IRST) IRCCS, Meldola (FC)	Ugo De Giorgi	Alessia Filograna	Valentina Gallà
Ginecologia Chirurgica, Ospedale S. Gerardo, Monza (MI)	Andrea Alberto Lissoni		
Ospedale Ostetrico Ginecologico S. Anna, Torino	Dionissios Katsaros, Emilie Marion Canuto, Fulvio Borella		
Oncologia Medica, A.U.S.L. di Reggio Emilia, IRCCS Presidio Arcispedale S. Maria Nuova, Reggio Emilia	Alessandra Bologna		Dr.ssa Erika Gervasi
SOC Oncologia Medica e Prevenzione Oncologica, Centro di Riferimento Oncologico, Aviano (PN)	Simona Scalone	Anna Maria Colussi	Dr Gianna Tabaro
Oncologia Medica - AOU Policlinico di Modena	Cinzia Baldessari		Elisa Pettorelli
U.O.C. Oncologia Medica A.O.Garibaldi Nesima, Catania	Roberto Bordonaro, Concetta Martines	Marisa Mammone	Francesco Avola
Day Hospital Oncologico Ospedale Guastalla (RE)	Filippo Giovanardi, Stefania Lui		
Oncologia Medica, Azienda Ospedaliera San Pio, Benevento	Domenico Germano, Vincenza Tinessa, Emiddio Barletta, Marianna Bareschino	Daniela Colucci, Raffelina Zampetti	
Dipartimento di Oncologia, A.O.U. S. Maria della Misericordia, Udine	Claudia Andreetta, Paola Ermacora		
Ospedale Mater Salutis Oncologia Medica, AULSS 21, Legnago (VR)	Filippo Greco		Eva Pigozzi
Ginecologia e Ostetricia, Ospedale Del Ponte, Varese	Nicoletta Donadello, Chiara Apolloni		Simona Carollo
UOC Medicina Oncologica, Ospedale Ramazzini di Carpi, Day Hospital Ospedale di Mirandola	Lucia Longo, Donatella Giardina		Giorgia Razzini
Oncologia Ospedale S.Vito, Centro di Riferimento Oncologico di Aviano (PN)	Alessandro Del Conte	Marta Ballaben, Fabrizia Ambrosio	Manuela Bertola
Ginecologia e Ostetricia, IRCCS Ospedale San Raffaele, Milano	Alice bergamini	Chiara Ritella	Giorgia Lupi
Ostetricia e Ginecologia, Fondazione IRCCS S. Matteo, Pavia	Chiara Cassani, Marianna Roccio, Francesca Zanellini, Luciana Babilonti		
UO di Oncologia Medica 1, IRCCS .S.Martino IST, Genova	Giuseppe Damiano, Maria Laura Iaia		

Institution	Physicians	Nurses	Trial coordinators, data managers
Dipartimento di Oncologia, SSD Mesotelioma, A.S.O. SS Antonio e Biagio e Cesare Arrigo, Alessandria	Vittorio Fusco, Giovanna Bellotti		Iolanda De Martino, Manuela Alessio
Servizio di Oncologia Medica, Ospedale S. Croce A.O. Ospedali Riuniti Marche Nord, Fano (PS)	Rodolfo Mattioli, Gianluca Laici, Luca Imperatori, Raffaella Bracci	Sonia Profili, Claudia Gasparoli, Lorena Roberti, Giovanna Casavecchia, Roberta Mencarelli	Silvia Pelliccioni
Oncologia Medica, Fondazione del Piemonte per l'Oncologia, IRCCS di Candiolo (TO)	Massimo Aglietta, Giorgio Valabrega, Valentina Tuninetti, Gaia Giannone		
Oncologia Medica, Istituto Sacro Cuore Don Calabria, Negrar di Valpolicella (VR)	Stefania Gori, Paola Agnese Cassandrini	Sonia Zamboni	Fabiana Marchetti
Oncologia Medica Osp. S. Maria della Misericordia, AO di Perugia	Anna Maria Mosconi, Roberta Matocci	Sara Medici	
Istituto Nazionale Tumori Regina Elena, Roma	Enrico Vizza, Antonella Savarese, Mariantonia Carosi		
Oncologia Medica, Osp. S. Maria delle Croci, AUSL di Ravenna	Claudia Casanova		
U.O di Oncologia Clinica, Azienda Ospedaliera Universitaria Arcispedale Sant'Anna, Ferrara	Marina Marzola, Elena Mauro, Elisa Tiberi		
Oncologia Medica, Ospedale degli Infermi Rimini, Ospedale Cervesi, Cattolica (RN)	Valentina Arcangeli		Giuliana Drudi
Ospedale A. Manzoni Lecco S.C. Oncologia Medica, Lecco (CO)	Federica Villa, Alessandra Crippato	Elena Rusconi	Cristina Corbetta, Daniela Turoli, Carlo Curioni
Ginecologia ed Ostetricia, P.O. Manerbio AOD (BS)	Daniela Gatti, Vincenzo Scannapieco	Melissa Ungari	Francesca Chiudinelli
Divisione di Oncologia ed Ematologia Azienda Ospedaliera C.Poma, Mantova	Anita Rimanti, Giovanna Catania		Patrizia Morselli
DH Oncologia Medica, Ospedale Fabrizio Spaziani di Frosinone	Filomena Narducci, Silvia Quadrini		Pasquale Buanne
U.O. di Oncologia Medica, Ospedale Civile degli Infermi, Faenza (RA)	Stefano Tamberi		Alessandra Piancastelli
Centro Sociale Oncologico, Azienda Sanitaria Universitaria Integrata di Trieste	Angela Denaro, Rita Ceccherini		
Oncoematologia, Ospedale Mater Domini, Università Magna Grecia, Catanzaro	Angela Salvino		
Dipartimento di Oncologia, Istituto di Ricerche Farmacologiche Mario Negri (IRFMN), Milano	Roldano Fossati		

Institution	Physicians	Nurses	Trial coordinators, data managers
Unità Sperimentazioni Cliniche, Istituto Nazionale Tumori, IRCCS Fondazione G.Pascale, Napoli	Francesco Perrone, Gennaro Daniele, Maria Carmela Piccirillo, Laura Arenare, Piera Gargiulo, Antonia Del Giudice	Jane Bryce	Cristiana De Luca, Simona Bevilacqua, Giuliana Canzanella, Giovanni De Matteis, Manuela Florio, Marilena Martino, Fiorella Romano, Lucia Sparavigna, Alfonso Savio, Anna Gimigliano, Maria Teresa Ribecco