

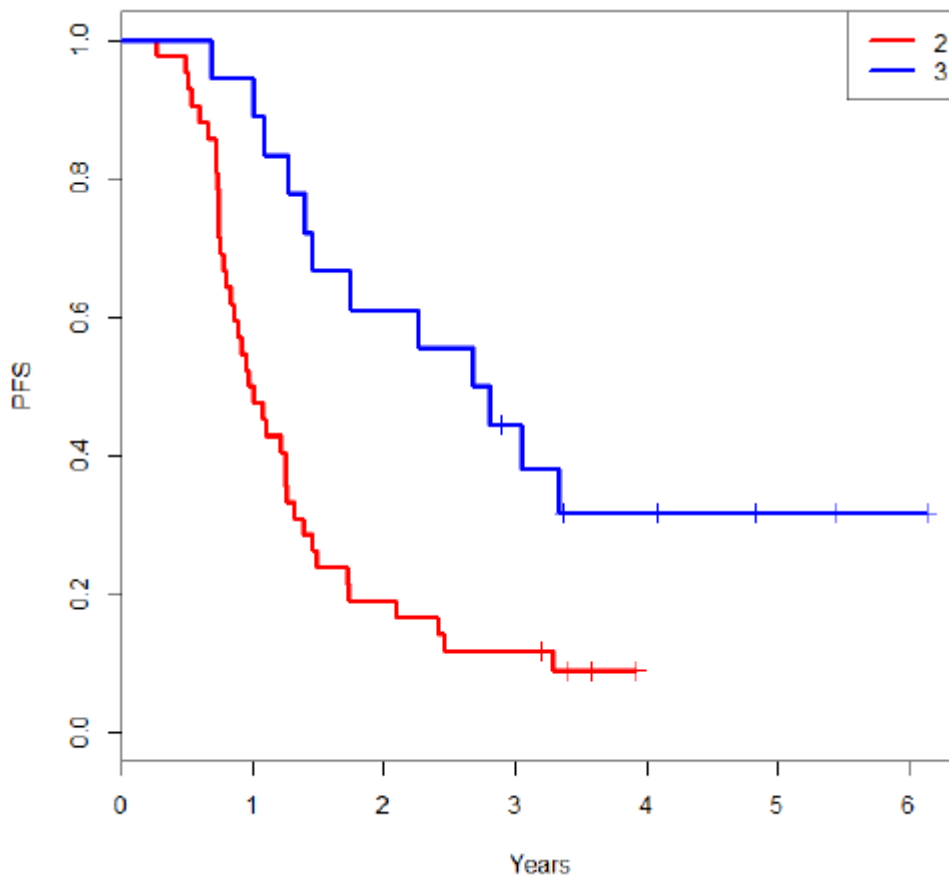
## Online-only Supplementary Data and Figure

### **PFS and OS analysis including original test cohort patients**

To investigate the consistency between initial and updated results and to exclude bias that could have been introduced by adding additional 20 consecutive patients a separate analysis was performed using the original test cohort of N = 60 patients. The median follow up for this cohort was 4.8 years (min 3.3 years, max 7.7 years). At the data cutoff date 80% PFS events (48 events / 60 patients) and 60% OS events (36 events / 60 patients) have been observed. The results were overall consistent with the extended cohort: Median PFS was 0.97 years for CRS2 and 2.68 years for CRS3, HR 0.35 (95% CI 0.17; 0.70),  $P = 0.003$ . Median OS was 2.55 years for CRS2 versus 5.47 years for CRS3, HR 0.18 (95% CI 0.07; 0.49),  $P = 0.0008$ . Kaplan Meier curves of PFS (A) and OS (B) are provided in Figure S1.

**Figure S1**

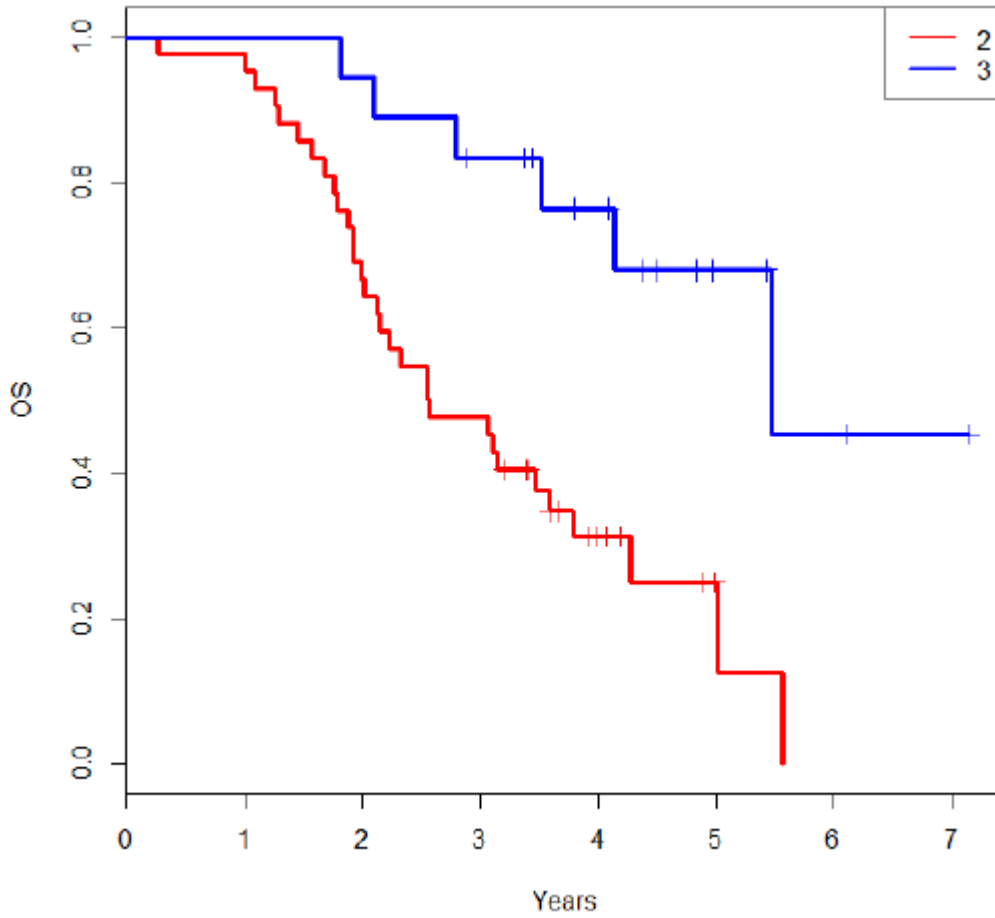
A



**Number patients at risk**

CRS Score	Year						
	0	1	2	3	4	5	6
2	42	21	8	5	0	0	0
3	18	17	11	7	4	2	1

B



Number patients at risk

CRS Score	Year						
	0	1	2	3	4	5	6
2	42	41	28	20	7	2	0
3	18	18	17	14	10	4	2

**Figure S1.** (A) Progression-free survival and (B) Overall survival of patients in the original test cohort of 60 patients on which the CRS score was developed. Red curves show patients with chemotherapy response score of CRS 2 (intermediate response; no case was scored as CRS1) and blue curves show patients with a chemotherapy response score of CRS 3 (complete or near complete response) after neoadjuvant chemotherapy and interval debulking surgery.